

**Part I.** Question 1 to 10, you should choose the answer closest in meaning to the underlined word or phrase. **One answer only.** 2 points for each.

1. When they heard the good news about the court's decision, the angry crowd cheered and then began to disperse.  
A. roar B. get upset C. get excited D. scatter E. gather
2. Because their fundamental difference, they would never get to like each other.  
A. disparity B. contradictory C. hatred D. delinquency E. intensity
3. No one suspected that Jerry was a spy. On the surface he behaved like any normal citizen. When his covert activity was discovered and announced to the world, we were all shocked.  
A. friendly B. helpful C. loud D. stimulating E. hidden
4. Michael is an ardent supporter of his presidential candidate. That became obvious to me when I found out how much time he's donated to the campaign.  
A. old B. intelligent C. foolish D. very strong E. stubborn
5. Kathy was looking for a strong but light material to use for making her water jugs. Unfortunately, she chose noodelite. It proved too porous to hold jelly.  
A. good for holding things B. protective C. permeable D. necessary E. luscious
6. Based on what is known, the term pulsar is used to describe the phenomenon of short, precisely timed radio bursts that are emitted from somewhere in space.  
A. released B. jumped C. revolved D. received E. wandered
7. This replica fooled a lot of experts and was considered a valuable work of art.  
A. a dishonest act B. something ugly C. anything that has no value D. a copy E. an evil act
8. The status quo of the country remains a debated issue among people.  
A. future B. current situation C. crisis D. benefit E. changing situation
9. These results support the hypothesis that individuals are willing to pay more in order to live in communities that provide high-quality services.  
A. angle B. experiment C. theory D. benefit E. evidence
10. The examiners soon realized that this student came to the oral defense for his thesis off the cuff.  
A. on time B. in a hurry C. with careful observation D. enthusiastically E. without preparation

**Part II.** Question 11-15, please choose the answer that best completes the sentence. Question 16-25 you should choose the best answer to fill each of the numbered blanks in the passage. **One answer only.** 2 points for each.

11. They said they had their equipment \_\_\_\_\_ yesterday.  
A. to be shipped B. shipped C. shipping D. ship E. was being shipped.
12. The ability to identify and exploit opportunities is the key \_\_\_\_\_ business product.  
A. to B. of C. for D. toward E. in
13. \_\_\_\_\_ the size of urban populations in the world is the most urgent problem many countries face.  
A. Rising B. Rise with C. The rise of D. Being Risen by E. Rise in
14. \_\_\_\_\_ incidents of Ebola virus outbreaks have been isolated incidents.  
A. The most B. Mostly C. Most D. Most of E. The most of
15. \_\_\_\_\_ the difficulty and expense of working on an isolated island, construction took nearly a decade.  
A. Due to B. Because C. Despite D. Although E. Regarding

**Question 16-18**

America's 78 million credit cardholders carried an average balance of \$7,564 last year. The cost 16 interest and fees amounted to more than \$1,000 for the typical budget. If you just said, "Budget - what budget?," you know what I mean. Truth is, most of us go on spending sprees from time to time.

But, when power shopping creates the illusion of success, even 17, it has become a weakness. Some obvious

signs that spending is out of control include making minimum payments on your credit cards, late fees, 18, lack of a budget and loss of sleep over money worries.

16. A. on B. in C. with D. by E. of  
 17. A. with debts spiral out of control B. which debts spiraled out of control  
 C. because debts spiraling out of control D. as debts spiral out of control  
 E. when debts being spiral out of control  
 18. A. bouncing checks B. bounce checks C. check bounces D. bounce of checks E. bounced checks

**Question 19 to 22**

Freeze-drying is a technique that can help to provide food for astronauts. But it also has other applications nearer home. Freeze-drying is like suspended animation for food; you can store a 19 for years, and then, when you're finally ready to eat it, you can completely revitalise it with a little hot water. Even after several years, the original foodstuff will be virtually unchanged.

The technique basically involves completely removing the water from some material, such as food, while 20. The main reason for doing this is either to preserve the food 21 reduce its weight. Removing the water from food keeps it from spoiling, because the microorganisms such as bacteria that cause spoiling cannot survive without it. Similarly, the enzymes which occur naturally in food cannot cause ripening without water, so 22 from food will also stop the ripening process.

19. A. freeze-dried meal B. freeze-drying meal C. meal with freeze dry  
 D. meal in freeze drying E. frozen dry meal  
 20. A. it leaves the rest of material virtually being intact B. leaving the rest of the material virtually intact  
 C. leave the rest of the material virtually intact D. leave the rest of the material virtually being intact  
 E. left the rest of the material virtually intact  
 21. A. to B. but C. and to D. or to E. also to  
 22. A. to remove water B. remove water C. have water removed  
 D. that remove water E. removing water

**Question 23 to 25**

Dolphins are often the star attractions at zoos, aquariums and aquatic theme parks. They jump on command through fiery hoops and 23 other dolphins. They seem delighted to perform their tricks and side up to their human handlers, content with the applause of their audience, a pat on the head and a gift of some raw fish now and then 24. Dolphins have a darker side. Dolphins have an unusual ability: to plot with others, communicate plans and execute them effectively. This indicates intelligence and communicative skills beyond 25. Dolphins, porpoises and whales are often thought of as fish since they live in the water. However, they are aquatic mammals. They cannot live indefinitely under water and must come to the surface periodically for air. They have "blowholes" at the top of their skulls to exhale air, even under water. Their young are born alive and are suckled by the parents.

23. A. synchronized with B. in synchronization with C. synchronizing with  
 D. having synchronization with E. that have synchronized  
 24. A. However B. Therefore C. Consequently D. For example E. Comparatively  
 25. A. that most other animals are possessing B. other animals possess C. possessed by other animals  
 D. which other animals have possessed E. what most other animals possess

**Part III. Reading Comprehension.** In this part, you will read several passages. Each one is followed by one question or a number of questions about it (them). Question 26-40, you should choose the **ONE** best answer to each question. 2 points each.

the future will be able to learn from experience. They will be smart, strong, and untiring workers whose only goal will

高雄醫學大學 96 學年度碩士班及碩士在職專班招生考試 英文試題 第 3 頁

Turner almost wished that he hadn't listened to the radio. He went to the closet and grabbed his umbrella. He would feel silly carrying it to the bus stop on such a sunny morning.

18. We will be able to talk to these mechanical helpers and they will be able to respond in kind.  
26. Which probably happened?  
A. Turner realized that he had an unnatural fear of falling radio parts.  
B. Turner had promised himself to do something silly that morning.  
C. Turner had heard a weather forecast that predicted rain.  
D. Turner planned to trade his umbrella for a bus ride.  
E. Turner planned to take a taxi.

Someday we will all have robots that will be our personal servants. They will look and behave much like real humans. We will be able to talk to these mechanical helpers and they will be able to respond in kind. Amazingly, the robots of the future will be able to learn from experience. They will be smart, strong, and untiring workers whose only goal will be to make our lives easier.

27. Which sentence from the paragraph expresses the main idea?

- A. Someday we will all have robots that will be our personal servants.  
B. We will be able to talk to these mechanical helpers and they will be able to respond in kind.  
C. They will be smart, strong and untiring workers.  
D. Amazingly, the robots of the future will be able to learn from experience.  
E. They will look and behave much like real humans.

The success of fluoride in combating dental decay is well established and, without a doubt, socially beneficial. However, fluoride's toxic properties have been known for a century. In humans excessive intake (for adults, over 4 milligrams per day) over many years can lead to skeletal fluorosis, a well-defined skeletal disorder, and in some plant species, fluoride is more toxic than ozone, sulfur dioxide, or pesticides.

3. Some important questions remain. For example, the precise lower limit at which the fluoride content of bone becomes toxic is still undetermined. And while fluoride intake from water and air can be evaluated relatively easily, it is much harder to estimate how much a given population ingests from foodstuffs because of the wide variations in individual eating habits and in fluoride concentrations in foodstuffs. These difficulties suggest that we should be wary of indiscriminately using fluoride, even in the form of fluoride-containing dental products.

28. The passage suggests which of the following about the effect of fluoride on humans?

- A. The effect is more easily measured than is the effect of exposure to pesticides.  
B. The effect of fluoride intake from water and air is relatively difficult to monitor.  
C. In general the effect is not likely to be as harmful as the effect of exposure to sulfur dioxide.  
D. An intake of 4 milligrams over a long period of time usually leads to a skeletal disorder in humans.  
E. An intake of slightly more than 4 milligrams for only a few months is not likely to be life-threatening.

29. The paragraph following these passages is mostly likely about  
A. how to use fluoride carefully.  
B. diseases caused by ingesting too much fluoride.  
C. interesting results of experiment by some dental scientists.  
D. an analysis of fluoride in its use in other industries.  
E. scientific evidence provided by orthopedic specialists.

Superconductivity is the ability of certain materials to conduct electrical current with no resistance and extremely low losses. This ability to carry large amounts of current can be applied to electric power devices such as motors and generators, and to electricity transmission in power lines. For example, superconductors can carry as much as 100

times the amount of electricity of ordinary copper or aluminum wires of the same size.

Scientists had been intrigued with the concept of superconductivity since its discovery in the early 1900s, but the extreme low temperatures the phenomenon required was a barrier to practical and low-cost applications. This all changed in 1986, when a new class of ceramic superconductors was discovered that "superconducted" at higher temperatures. The science of high-temperature superconductivity (HTS) was born, and along with it came the prospect for an elegant technology that promises to "supercharge" the way energy is generated, delivered, and used.

30. In which of the following publication types would this article most likely appear in?

- A. A scholarly journal read by specialists and scientists who work directly with superconductivity
- B. A modern science magazine intended for leisure reading.
- C. A book chapter in an advanced chemistry textbook
- D. A magazine intended to be dispersed at home craft fair
- E. A trade show magazine which focuses on super-cooled refrigeration units

31. What is the barrier to superconductivity at the early stage of its discovery?

- A. high resistance
- B. technology that supercharge the way energy is used
- C. low-cost application
- D. its capacity to carry electricity
- E. low temperature

Those who criticize the United States government today for not providing health care to all citizens equate health care provision with medical insurance coverage. By this standard, seventeenth- and eighteenth-century America lacked any significant conception of public health law. However, despite the general paucity of bureaucratic organization in pre-industrial America, the vast extent of health regulation and provision stands out as remarkable.

Of course the public role in the protection and regulation of eighteenth-century health was carried out in ways quite different from those today. Organizations responsible for health regulation were less stable than modern bureaucracies, tending to appear in crises and wither away in periods of calm. The focus was on epidemics which were seen as unnatural and warranting a response, not to the many endemic and chronic conditions which were accepted as part and parcel of daily life. Additionally, religious influence was significant, especially in the seventeenth century. Finally, in an era which lacked sharp demarcations between private and governmental bodies, many public responsibilities were carried out by what we would now consider private associations. Nevertheless, the extent of public health regulation long before the dawn of the welfare state is remarkable and suggests that the founding generation's assumptions about the relationship between government and health were more complex than is commonly assumed.

32. Among the following statements about the United States government's role in the provision of health care, which finds the LEAST support in the passage?

- A. The government today addresses health concerns that formerly were not considered serious enough to warrant government involvement.
- B. What were once public health-care functions are now served by the private sector.
- C. Philosophical considerations play a less significant role today in the formulation of public health-care policies than in previous centuries.
- D. Public health care today is guided largely by secular rather than religious values.
- E. Modern public health-care agencies are typically established not as temporary measures but rather as permanent establishments.

33. Which of the following best expresses the author's point of contention with "those who criticize the United States government for not providing health care to all citizens" (lines 1)?

- A. Their standard for measuring such provision is too narrow.
- B. They underestimate the role that insurance plays in the provision of health care today.
- C. They fail to recognize that government plays a more significant role today in health care than in previous eras.
- D. They misunderstand the intent of the founding generation with respect to the proper role of the government in the

area of health care.

E. They lack any significant conception of public health law.

34. Which of the following best expresses the main point of the passage?

A. The government's role in health care has not expanded over time to the extent that many critics have asserted.

B. The government should limit its involvement in health care to epidemiological problems.

C. Health problems plaguing pre-industrial America resulted largely from inadequate public health care.

D. History suggests that the United States government has properly played a significant role in provision of health care.

E. Private insurance is an inadequate solution to the problem of health care.

Graffiti is a general term for wall writing, perhaps humankind's earliest art form. The crude wall writings of prehistoric times and the highly stylized street art of today's inner-city youths share one common feature: Each stems from a basic human need to communicate with others. For youths who may not be able to express themselves through other media, such as prose or music, graffiti represents an easily accessible and effective way to communicate with a large audience. Anyone can obtain a can of spray paint and "make their mark" on a highway overpass or the side of a building.

Modern graffiti generally falls into one of three categories—junk graffiti, gang graffiti, and tagging. Junk graffiti messages are not gang-related but often involve obscene, racist, or threatening themes. The line separating gang graffiti and tagging to more threatening gang activities, is now considered an entry level offense that can lead to more serious crimes, including burglary and assault.

35. According to these two passages, what is the common feature of Graffiti?

A. To threaten others    B. To make their mark    C. To communicate with others as a human need

D. To vandalize the landscape    E. To challenge the public

36. Paragraphs following these passages are most like about

A. detailed description of three categories of graffiti.

B. how to punish those who make graffiti.

C. why youths need to express themselves through such an urban crime.

D. other ways to communicate with people through other art forms.

E. the development of earlier graffiti.

Most cultures set an age at which its young people become adults in the eyes of the law. This age is called the age of majority. When people reach this age, usually 18, they become entitled to certain inalienable rights from which they were precluded as minors, such as the right to vote. Before becoming adults, minors are not able to enter into legal contracts. This is seen as being for their own protection. They are also protected from statutory rape, from being exploited in the labor market, and from having to go through the same penal system as adults.

37. Which of the following would be an example of a protection specifically to minors?

A. The right to vote    B. The right to a fair trial    C. Child labor laws

D. Separate penal system    E. Legal contracts

38. Which of the following would be an example of a right denied to minors?

A. The right to vote    B. The right to a fair trial    C. Child labor laws

D. Separate penal system    E. Going to court

39. The word "statutory" in the passage is closest in meaning to

A. part of a statue    B. punishable under the law    C. said or stated    D. serious    E. casual

40. In which of the following publication types would this article most likely appear in?
- A. A scholarly journal read by sociologists.    B. A modern magazine intended for leisure reading.  
C. A book chapter in a textbook about law and life    D. A newsletter intended to be dispersed at court  
E. A scholarly journal read by lawyers.

**Part IV. Essay. 20 points.**

The world's climate scientists recently reported unequivocally that the Earth's climate system is increasingly heating up and that it likely has not been this warm for at least 1300 years. We all must begin reducing global warming, and fortunately there is much to do. **Please write an essay in about 150 words about how you can help to reduce global warming.**

**Give single best response.**

1. Endogenous antioxidants decreased with age.
  - a. True
  - b. False
2. Ultraviolet(UV) decreases expression of retinoid receptors.
  - a. True
  - b. False
3. Fibroblasts cultured from photoaged skin can produce collagen similar to fibroblasts from sun-protected aged skin.
  - a. True
  - b. False
4. Which of the following is a primary prevention treatment of photoaged skin?
  - a. Chemical peel
  - b. Antioxidants
  - c. Sun avoidance
  - d. Retinoids
5. Both topical and oral antioxidants have been shown to reduce assessments of photodamage in clinical studies.
  - a. True
  - b. False
6. Collagen content is unchanged by topical estrogen treatment.
  - a. True
  - b. False
7. Which of the following is a feature of intrinsically aged skin?
  - a. Decreased ability to repair DNA damage
  - b. Delayed wound healing
  - c. Impaired barrier function
  - d. Decreased response to growth factors
  - e. All of the above
8. The function of tissue inhibitors of matrix metalloproteinases(MMPs) increased with age.
  - a. True
  - b. False
9. Which of the following is a tertiary therapy for photoaged skin?
  - a. Retinoids
  - b. Botulinum toxin A
  - c. Topical estrogen
  - d.  $\alpha$ -lipoic acid
10. Which of the following has the greatest risk of inducing an immune response?
  - a. Bovine collagen
  - b. Hyaluronic acid derivatives
  - c. Polymethyl-methacrylate microspheres
  - d. Autologous lipoaugmentation
11. The ultraviolet protection factor (UPF) of normal summer clothing is approximately
  - a. 10
  - b. 15
  - c. 30
  - d. 45
  - e. 60
12. Which therapy leads to the cleavage of synaptosomal-associated membrane protein (SNAP)-25?
  - a. Radiofrequency technology
  - b. Microcoblation
  - c. Botulinum toxin-A
  - d. Green tea polyphenols
13. After microdermabrasion, increased gene expression is noted for which of the following?
  - a. MMPs
  - b. Cytokines
  - c. Type I procollagen
  - d. All of the above
  - e. None of the above
14. Vitamin C
  - a. is an antioxidant
  - b. has been shown to prevent UV-induced erythema
  - c. has been shown to prevent sunburn cell formation
  - d. all of the above

- e. none of the above
- 15. Treatment with retinoids before UV exposure can
  - a. decrease UV-mediated AP-1 induction
  - b. decrease UV-mediated MMP activation
  - c. accelerate recovery of retinoid receptors after UV exposure
  - d. all of the above
- 16. Sun protection factor measurements incorporate how well sunscreens protect against UVA-induced free radicals.
  - a. True
  - b. False
- 17. Which of the following is a nonenzymatic antioxidant?
  - a. Superoxide dismutase
  - b. Coenzyme Q<sub>10</sub>
  - c. Catalase
  - d. Glutathione peroxidase
- 18. Which of the following is important in the up-regulation of collagen?
  - a. Action protein-1(AP-1)
  - b. Transforming growth factor- $\beta$  (TGF- $\beta$ )
  - c. Nuclear factor(NF)- $\kappa$  B (NF- $\kappa$  B)
  - d. Epidermal growth factor
- 19. What minimum dose of UV is required to up-regulate matrix metalloproteinase?
  - a. <1 minimal erythema dose (MED)
  - b. 2 MED
  - c. 4 MED
  - d. 8 MED
- 20. UV light up-regulates receptors for which of the following?
  - a. Epidermal growth factor
  - b. Tumor necrosis factor- $\alpha$
  - c. Interleukin 1
  - d. All of the above
- 21. The efficacy of nonablative laser systems for the treatment of photoaged skin has been demonstrated in large, randomized controlled clinical trials.
  - a. True
  - b. False
- 22. Which of the following is **not** an effect of ultraviolet light?
  - a. Induction of reactive oxygen species
  - b. Generation of cyclobutane pyrimidine dimers
  - c. AP-1-down-regulation
  - d. Generation of 8-hydroxyguanine
- 23. Which of the following is important in the inflammatory response associated with sunburn reactions?
  - a. RXR- $\alpha$
  - b. NF- $\kappa$  B
  - c. TGF- $\beta$
  - d. Vascular endothelial growth factor
- 24. Which of the following is **not** a characteristic of intrinsically aged skin?
  - a. Increased Langerhans cells
  - b. Flattened dermoepidermal junction
  - c. Decreased melanocyte number
  - d. Decreased elastin microfibrils
- 25. Which of the following statements is **correct**?
  - a. Epidermal thickness decreases with sun exposure.
  - b. Epidermal thickness increases with sun exposure.
  - c. Sun exposure dose not affect epidermal thickness.
  - d. Vitiligo patients have been shown to have decreased epidermal thickness.
  - e. None of the above
- 26. Which of the following is **not** a histologic feature of photoaged skin?
  - a. Inflammatory infiltrate
  - b. Keratinocyte atypia
  - c. Decreased elastin
  - d. Decreased collagen type I and type III
  - e. None of the above
- 27. Each of the following lasers can be used for epidermal pigment removal **except**
  - a. potassium-titanyl-phosphate (KTP) (532 nm)
  - b. quality-switched(QS) ruby (694 nm)



- c. QS alexandrite (755 nm)
  - d. diode (1450 nm)
  - e. carbon dioxide (CO<sub>2</sub>) (10,600 nm)
28. What is the **most** common side effect of laser-assisted tattoo removal?
- a. Hyperpigmentation
  - b. Scarring
  - c. Infection
  - d. Granulomatous tissue reaction
  - e. Tattoo ink hypersensitivity
29. The laser of choice for port-wine stains is the
- a. argon-pumped tunable dye
  - b. KTP
  - c. erbium:YAG
  - d. pulsed dye
  - e. QS ruby
30. Continuous-wave (CW) lasers can be used safely in the treatment of which of the following?
- a. Professional tattoos
  - b. Seborrheic keratoses
  - c. Severe rhytides
  - d. Intra-dermal nevi
  - e. Becker's nevi
31. Skin moisture is related to the
- a. intact functioning of the stratum corneum
  - b. content of lipids at the skin surface
  - c. content of glycosaminoglycans within the dermis
  - d. all of the above
  - e. none of the above
32. Millisecond range (long-pulsed (LP)) pigment-specific laser systems can be used to treat each of the following **except**
- a. melanocytic nevus
  - b. hypertrichosis
  - c. Becker's nevus
  - d. tattoo
  - e. congenital hairy nevi
33. The **most** likely mechanism of action of ablative laser-induced neocollagenesis is
- a. elongation of interpeptide bonds with the collagen moiety
  - b. collagen shrinkage and remodeling
  - c. decreased expression of smooth muscle actin
  - d. epidermal vaporization
  - e. epidermal regeneration
34. The loss of dermal collagen with age
- a. is not affected by hormonal status
  - b. is more closely related to chronologic age
  - c. is more closely related to postmenopausal age
  - d. occurs at a rate of 3% to 5% per year
  - e. does not vary with estrogen supplementation
35. The mechanism of action **most** likely responsible for improvement of photodamaged facial skin using nonablative lasers include each of the following **except**
- a. increased dermal fibroplasias
  - b. thermal deposition within the superficial dermis
  - c. nonspecific wound repair mechanisms
  - d. endothelial cell damage
  - e. epithelial regeneration
36. Important safety issues during any cutaneous laser treatment include all of the following **except**
- a. infectious agents contained within a laser plume
  - b. electrical hazards
  - c. eye protection
  - d. flammability
  - e. all of the above are vital safety issues.
37. The use of estrogen supplementation to treat cutaneous signs and symptoms of aging
- a. should be routinely recommended in every patient
  - b. should be routinely recommended for postmenopausal women
  - c. should never be considered an acceptable treatment
  - d. should be carefully evaluated by physicians and patients to assess the risk to benefit ratio

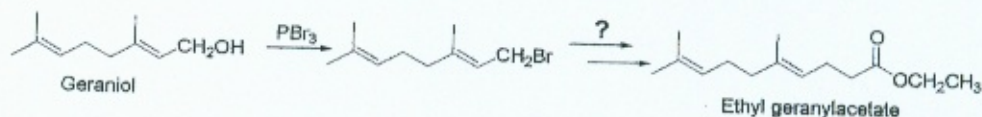
- e. should be recommended for elderly men only given the increased risk of breast cancer in women
- 38. The most common side effect of treatment with the pulsed dye laser(PDL) for vascular lesion is
  - a. vesiculation
  - b. scarring
  - c. purpura
  - d. hypopigmentation
  - e. hyperpigmentation
- 39. The most serious (and potentially permanent) complications of ablative laser skin resurfacing include all of the following except
  - a. hypertrophic scarring
  - b. systemic infection
  - c. ectropion
  - d. pigmentary alteration
  - e. dermatitis
- 40. Cutaneous effects of the menopause include
  - a. dryness
  - b. wrinkling
  - c. atrophy
  - d. poor wound healing
  - e. all of the above
- 41. An intense pulsed light source emits
  - a. coherent light
  - b. noncoherent light
  - c. at a wavelength of 10,600 nm
  - d. continuous-wave energy
  - e. monochromatic light
- 42. Which of the following has been successfully treated with a pulsed dye laser (PDL)?
  - a. Port-wine stain
  - b. Hypertrophic scarring
  - c. Pyogenic granuloma
  - d. Facial telangiectasia
  - e. All of the above
- 43. Which of the following statements is true?
  - a. Early striae respond better to laser therapy than late striae.
  - b. Striae respond best to low-fluence PDL irradiation
  - c. Caution is indicated when treating striae in patients with darker skin tones because of the risk of pigmentary alteration.
  - d. None of the above
  - e. a, b, c
- 44. The 308-nm excimer laser has been used to successfully treat psoriasis.
  - a. True
  - b. False
- 45. The 308-nm excimer laser has been used to successfully treat vitiligo.
  - a. True
  - b. False
- 46. Acne is resistant to laser treatment.
  - a. True
  - b. False
- 47. Laser therapy is the gold standard when treating lower extremity spider veins.
  - a. True
  - b. False
- 48. Confocal scanning laser microscopy allows diagnostic, noninvasive imaging of the skin.
  - a. True
  - b. False
- 49. Melasma
  - a. most commonly affects the ears and neck
  - b. most commonly affects skin types I and II
  - c. occurs more commonly in skin types IV to VI
  - d. occurs only in pregnancy
- 50. Which of the following have been associated with the development of melasma?
  - a. Photosensitizing agents
  - b. Finasteride
  - c. Hormone replacement therapy (HRT)
  - d. All of the above
  - e. a and c

一、 解釋名詞 (請依題號順序書寫作答, 每題 3 分, 共 30 分)

1. Sun Protection Factor, SPF
2. Phototoxicity
3. Transepidermal Water Loss, TEWL
4. Saponification Value, SV
5. Hydrophilic Lipophilic Balance, HLB
6. Critical Micelle Concentration, CMC
7. Primary Contamination
8. Biotechcosmetics
9. Liposomes
10. Absolute Oil

二、 簡答題 (請依題號順序書寫作答, 每題 5 分, 共 25 分)

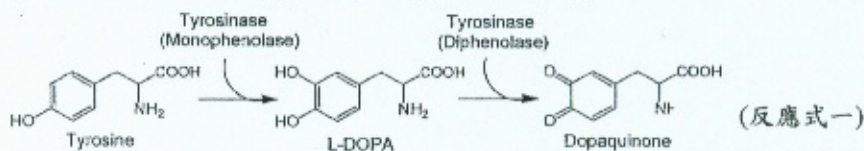
1. Beewax 中含有約 20% 的脂肪酸[其中以 lignoceric acid ( $C_{23}H_{47}COOH$ )及 cerotic acid ( $C_{25}H_{51}COOH$ )為主], 在按摩霜的置備中, 吾人可利用 Beewax 與 Borax( $Na_2B_4O_7$ )反應所得之金屬肥皂作為乳化劑, 試以 cerotic acid ( $C_{25}H_{51}COOH$ )為例, 寫出 Beewax 與 Borax 反應之反應式。
2. 非離子型界面活性劑之 HLB 值可由 Griffin 計算式推知, 已知某多元醇的脂肪酸酯其酸價為 200, 皂化價為 157, 請問(a)此多元醇的脂肪酸酯之 HLB 值為何?(b)此種界面活性劑可作為何種用途?【註:(a)小題未答對者(b)小題亦不計分】
3. Rose oil 之主成分為 geraniol, 試藉由 malonic ester synthesis 將 geraniol 轉變成 ethyl geranylacetate 之反應式寫出



4. 8 克的橄欖油(olive oil)皂化時需要氫氧化鉀(KOH)1.520 克, (a) 請問橄欖油之皂化價為何? 今取 50 克橄欖油及 25 克豬油(SV:196)進行皂化, 請問(b)若以氫氧化鈉(NaOH)為鹼劑, 所需之氫氧化鈉為多少?(c) 若以三乙醇胺為鹼劑, 所需之三乙醇胺為多少?(KOH:56, NaOH:40, Triethanolamine:149, 計算至小數點第二位並四捨五入取至小數點第一位)
5. 試寫出五種含藥化粧品中使用之成分, 並簡單說明其用途 (ex. 1. Lead acetate: 染髮, 2. Aluminum chloride: 止汗制臭)

三、 問答題 (請依題號順序書寫作答，每題 15 分，共 45 分)

1. 化粧品的品質保證(Cosmetics Quality Assurance)旨在保證化粧品的品質能讓消費者安心而滿意的購買，且使用起來有安全感、滿意感、並可長期使用。是以化粧品的品質保證在研究、製造及販賣等各部門中各自有其保證業務，請根據上述，闡明化粧品的品質保證(Cosmetics Quality Assurance)。
2. 依化學結構之差異，說明界面活性劑(surfactants)之種類及其應用。
3. a. 試說明常用之美白成分的作用機轉。(10 分)  
 b. 酪氨酸酶催化生成 Dopaquinone 之過程如下列反應式所示。表格中各化合物已被報導為 Tyrosinase 抑制劑，試依結構特徵說明各化合物為何種類型之抑制作用。(5 分)



compounds	Type of inhibition
 Quercetin	<input type="checkbox"/> competitive <input type="checkbox"/> non-competitive <input type="checkbox"/> mix type <input type="checkbox"/> irreversible
 arbutin	<input type="checkbox"/> competitive <input type="checkbox"/> non-competitive <input type="checkbox"/> mix type <input type="checkbox"/> irreversible
 Kojic acid	<input type="checkbox"/> competitive <input type="checkbox"/> non-competitive <input type="checkbox"/> mix type <input type="checkbox"/> irreversible
 Cinnamaldehyde	<input type="checkbox"/> competitive <input type="checkbox"/> non-competitive <input type="checkbox"/> mix type <input type="checkbox"/> irreversible
 Captopril	<input type="checkbox"/> competitive <input type="checkbox"/> non-competitive <input type="checkbox"/> mix type <input type="checkbox"/> irreversible